

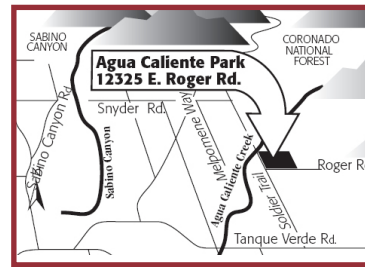
Pima County Natural Resources, Parks and Recreation offers environmental field study programs at three of the region's best natural resource parks. **Roy P. Drachman Agua Caliente Park**, on the far east side, is a true oasis in the desert. Natural spring-fed ponds attract a variety of wildlife and provide some of the most exciting bird watching in town. **Feliz Paseos Park** and **Tucson Mountain Park**, located on the west side, showcase the iconic Saguaro-Paloverde ecosystem characteristic of the Sonoran Desert.

Read through the detailed program descriptions located inside to help you decide which park and program best suit the needs of you and your class. Program locations and durations are listed below.

Program Title	Time	Locations Offered			
		Agua Caliente	Feliz Paseos	Tucson Mt. Park	Class
Desert Wildlife Ecology and Sonoran Desert Conservation	1 hour				✓
Map and Compass	2 hours	✓	✓		✓
Riparian and Desert Ecosystem Discovery	2 hours	✓	✓		
Geology of the Tucson Mountains	2.5 hours			✓	
Tucson's River of Words Youth Poetry & Art Contest	2 hours				✓
Water Monitoring in Freshwater Habitats	2.5 hours	✓			

For more information or to schedule a program for your class, contact us at:

**(520) 615-7855**  
or [eeducation@pima.gov](mailto:eeducation@pima.gov)



PIMA COUNTY  
BOARD OF SUPERVISORS

Richard Elías, Chairman, District 5  
Ann Day, District 1  
Ramón Valadez, District 2  
Sharon Bronson, District 3  
Raymond J. Carroll, District 4

COUNTY ADMINISTRATOR  
C.H. Huckelberry



PIMA COUNTY  
NATURAL RESOURCES, PARKS AND RECREATION  
ENVIRONMENTAL EDUCATION  
3500 West River Road, Tucson, AZ 85741  
(520) 615-7855 • (520) 615-6315/fax  
[www.pima.gov/nrpr](http://www.pima.gov/nrpr)

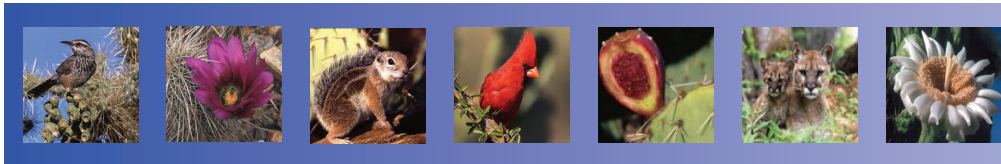
# ENVIRONMENTAL FIELD STUDY PROGRAMS



## HIGH SCHOOL

Pima County  
Natural Resources,  
Parks and Recreation

[www.pima.gov/nrpr](http://www.pima.gov/nrpr)



### Desert Wildlife Ecology and Sonoran Desert Conservation

Multimedia and live wildlife presentations are available to enhance the study of desert wildlife. This program is useful as a preparation for field study trips to Pima County's natural resource parks or to enhance biology, ecology and conservation education classes. Presentation focus is easily adapted to the specific needs of each classroom

**Linked to Arizona Academic Standards - [Science](#) S3C1PO1, PO3, PO4, PO5; S4C3 PO1, PO2, PO3; S4C4 PO4, PO6; [Social Studies](#) 4SCP6**

### Geology of the Tucson Mountains

The geology of the Tucson Mountains is often described as chaotic due to the hodge-podge of geologic features seen today. Explore some of these dramatic features to understand how the Tucson Mountains and basin were formed. Use the geologic record to understand how the environment has made dramatic changes over the past 250 million years. This field trip involves relatively easy hiking over desert terrain.

**Linked to Arizona Academic Standards - [Science](#) S6C1HSPO1, PO2; S6C3HSPO4; 6SC-P4**



### Tucson's River of Words Youth Poetry & Art

Tucson's River of Words Youth Poetry & Art Contest incorporates science and art for a truly unique experience. Use watershed models to learn about watersheds and water cycles. Then, work with a professional artist or poet to learn techniques to express your knowledge through original works of poetry or mixed media art. Contest entry forms will be available at the program. Contest deadline is February 1, 2008.

**Linked to Arizona Academic Standards - [Visual Arts](#) 1AV-R1-R6, F1, F4, F6, F8, E1, E4, E5, P1, P2; 2AV-R2,R3, F1, F2, F3, E1, E3, P1; 3AV-R2, F2, E1; [Language Arts](#) R-R1, R5, F2, F4, F5, F8, E2, E3, E4, E6, P2; W-R1, R2, F1, F2, F3, E1, E2, P1, P6, D1, D2; LS-R3, R4, R5, F1, F3, E2, E4, P3, D2, D4; VP-R3, F3, E1, P3; [Science](#) S6: C3: G4PO1. [Social Studies](#) 3SS -F2, PO1, PO3, PO5; 3SS-E1PO3, E7PO6, P4PO3, P4PO5, D3PO2, D3PO6**

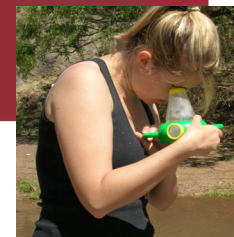
### Riparian and Desert Ecosystem Discovery

Explore the diversity of life in riparian and desert ecosystems through guided, hands-on exploration. Use binoculars and hand-lenses to make observations and express findings through ecosystems models. Topics covered include food webs, water cycles and chemical cycles.

**Linked to Arizona Academic Standards [Science](#) S3:C3:HSPO1; S4:C1:HSPO4**



All environmental field study programs are linked to the **Arizona Academic Standards** and selected programs are available for the schoolyard or classroom. Check the *location table* to find out which program is best suited for your students.



### Water Monitoring in Freshwater Habitats

The natural spring and pond at Agua Caliente Park are teeming with life. Collect samples for measuring water quality and identifying indicator species. Use data collected to learn the relationship between water quality and the abundance of life. Water chemistry tests conducted include pH, electrical conductivity, alkalinity and dissolved oxygen.

**Linked to Arizona Academic Standards - [Science](#) S4: C3 HSPO1, HSPO2; C4 HSPO4, HSPO6; C5 HSPO2 HSPO4. S5: C1 HSPO2; C4 HSPO2, HSPO12**

### Map and Compass

A fun and practical way to explore the desert is through orienteering, or the use of map and compass to find your way. Learn how the Earth's natural magnetic field interacts with a compass and how wildlife relies on magnetic fields to navigate their way. Then, use a compass with a topographic map to determine bearing and distances to specific map points.

**Linked to Arizona Academic Standards [Mathematics](#) HS S1C3PO1, S4C3PO7, S4C4PO9. [Health](#) S2 2PA-P5 PO1. [Social Studies](#) 3SS-P1 PO1, 3SS-D1 PO5**

